

ID Chair Concept

Antonio Citterio, 2010/2012



ID Chair Concept

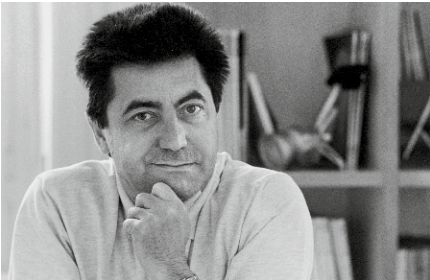
Vitra develops new solutions for the changing work environment and has experimented with materials and technologies for the past fifty years with the aim of creating better office chairs.

The ID Chair Concept is a collection of office swivel chairs that puts all this experience and expertise into practice for the benefit of companies and the people who work for them.

The office chair is by far the most important piece of furniture for office workers, as it has a decisive influence on productivity, health and well-being in the workplace. Since individuals spend countless hours sitting at work, they not only expect 'their' chair to keep them healthy and fit, but also to help define their personal sphere within the space of the office.

The increasingly diverse expectations of employees run counter to the interests of companies: facility managers and procurement teams aim to rationalise purchasing, service and maintenance with standardised chairs.

It is not possible for a single office chair to satisfy these conflicting demands. Antonio Citterio, a master of systems, recognised the need for a unified range of versatile models in his collaborative work with Vitra. The ID Chair Concept was developed to meet the multifarious requirements – functional, economic and aesthetic – of both employees and companies in today's office world.



Antonio Citterio

The architect and designer Antonio Citterio, who lives and works in Milan, has collaborated with Vitra since 1988. Together they have produced a series of office chairs and various office systems, as well as products for the Vitra Home Collection. The Citterio Collection is constantly being expanded.

1	ID Chair Concept	13	Armrests	23-26	ID Mesh
2-3	Countless options	14-15	Cover fabrics	27-30	ID Soft
4-8	ID Chair, backrest	16-17	Sustainable quality	31-34	ID Trim
9-11	FlowMotion mechanism	18	Modular components	35-38	ID Trim L
12	ProMatic mechanism	19-22	ID Air	39-41	ID Trim Cap



Different ID Chair models in subdued shades of light grey.



Leather and fabric covers in earthy colours.



ID Chairs with a classic look in dark tones.



ID Air with fresh colours on the seat cushions.



ID Mesh with netweave backrests and seat upholstery in muted hues.



Twill wool fabric gives ID Trim and ID Trim L an elegant appearance.



Components of the modular ID Chair system

The ID Chair Concept offers countless customisation options to suit individual users. Choices between the precisely adjustable FlowMotion mechanism or the ProMatic mechanism with automatic weight adjustment, various types of backrests, bases and armrests as well as many different colours and upholstery covers make it possible for every individual user and every company to find their 'own' ID Chair. Despite the many possible combinations, it always remains essentially the same chair – bringing advantages both in terms of acquisition

and maintenance.

The office swivel chair range is made up of many components to satisfy a wide spectrum of requirements with respect to aesthetics, materials, purpose and price. Choosing the right ID Chair begins with the following selection of basic models:

ID Air with perforated plastic backrest

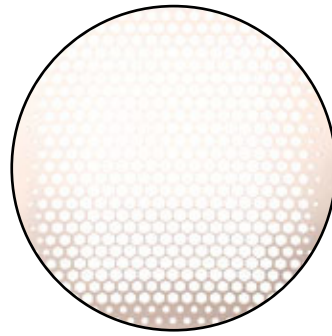
ID Mesh with padded mesh backrest

ID Soft with classic upholstered backrest

ID Trim with narrow backrest

ID Trim L with high backrest

ID Trim Cap with privacy hood



ID Air backrest with zones of varying flexibility

ID Air represents simplicity in design without relinquishing comfort. The one-piece plastic backrest of ID Air is manufactured in a patented process. The pattern of strategically placed perforations and the high-tech plastic material create firmer zones to provide support and more pliant zones to grant freedom of movement. The flexibility of the backrest and effective air circulation are complemented by soft seat upholstery to ensure a high degree of comfort. Thanks to the easy-to-clean material, the backrest is also available in light colours, allowing high-contrast combinations with seat covers in a different shade.

ID SOFT BACKREST

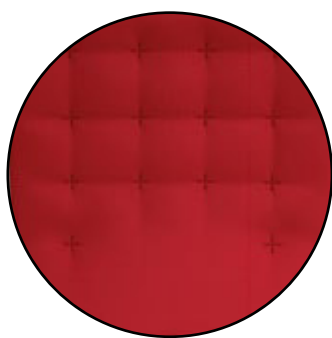


Soft seat padding ensures superb comfort

With its pleasantly padded backrest, ID Soft presents clean lines and geometric forms, which give it an understated, sleek appearance. Thanks to its reductive aesthetic, ID Soft harmonises perfectly with a wide range of different architectural environments. The backrest is height-adjustable and provides excellent support for the upper shoulder region. The support in the lumbar zone can be precisely adjusted to prevent the pelvis from tilting backwards.



ID Trim conveys a sense of classic elegance and quality craftsmanship. The self-supporting backrest construction consists of a fabric or leather cover stretched across the frame. The multi-chamber padding creates an upholstered effect with comfortable support.



Supportive lumbar zone

The interplay of the polyamide frame with the multi-chamber padding gives the backrest its three-dimensional range of movement. It adapts to the contours of the sitter's body and distributes varying degrees of flexibility and support to the correct zones (3-zone comfort).

1. Support in the lumbar zone: integrated lumbar cushion with optional height adjustment for effective support of the lower back. The lumbar cushion transitions smoothly into the flexible middle zone.
2. Flexibility in the thoracic zone: relieves strain in the muscles and spinal discs and maintains the head and shoulders in an upright position.
3. Support in the shoulder zone: keeps the neck from hyperextending so the neck muscles stay relaxed. The neck region remains in its natural position, which helps to prevent tension and strain.



ID Trim L provides additional support for the neck region and can also be used as an executive chair thanks to its high backrest.

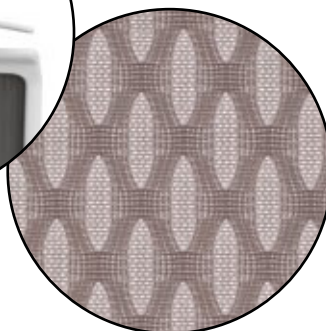
With its protective hood, ID Trim Cap visually and acoustically shields the user and provides a zone of retreat, which is especially useful in open-plan offices. Even in busy work environments, it gives individuals a sense of personal space and privacy – helping them to concentrate and block out disturbances.



ID Trim and ID Trim L can be equipped with a clothes hanger



ID Mesh with headrest
and clothes hanger



Three-dimensional Diamond
Mesh cover fabric

ID Mesh embodies technical transparency and lightness: fitted over a slender frame, the innovative spacer fabric has the translucent airiness of a net – yet it's as soft as a slim cushion. This structure not only provides a comfortable upholstered effect, but also ensures pleasant ventilation.

The backrest consists of just two plastic parts: the frame and the adjustable lumbar support. This construction provides support in the lumbar region and flexibility for the upper back. ID Mesh can be outfitted with a clothes hanger and a headrest.

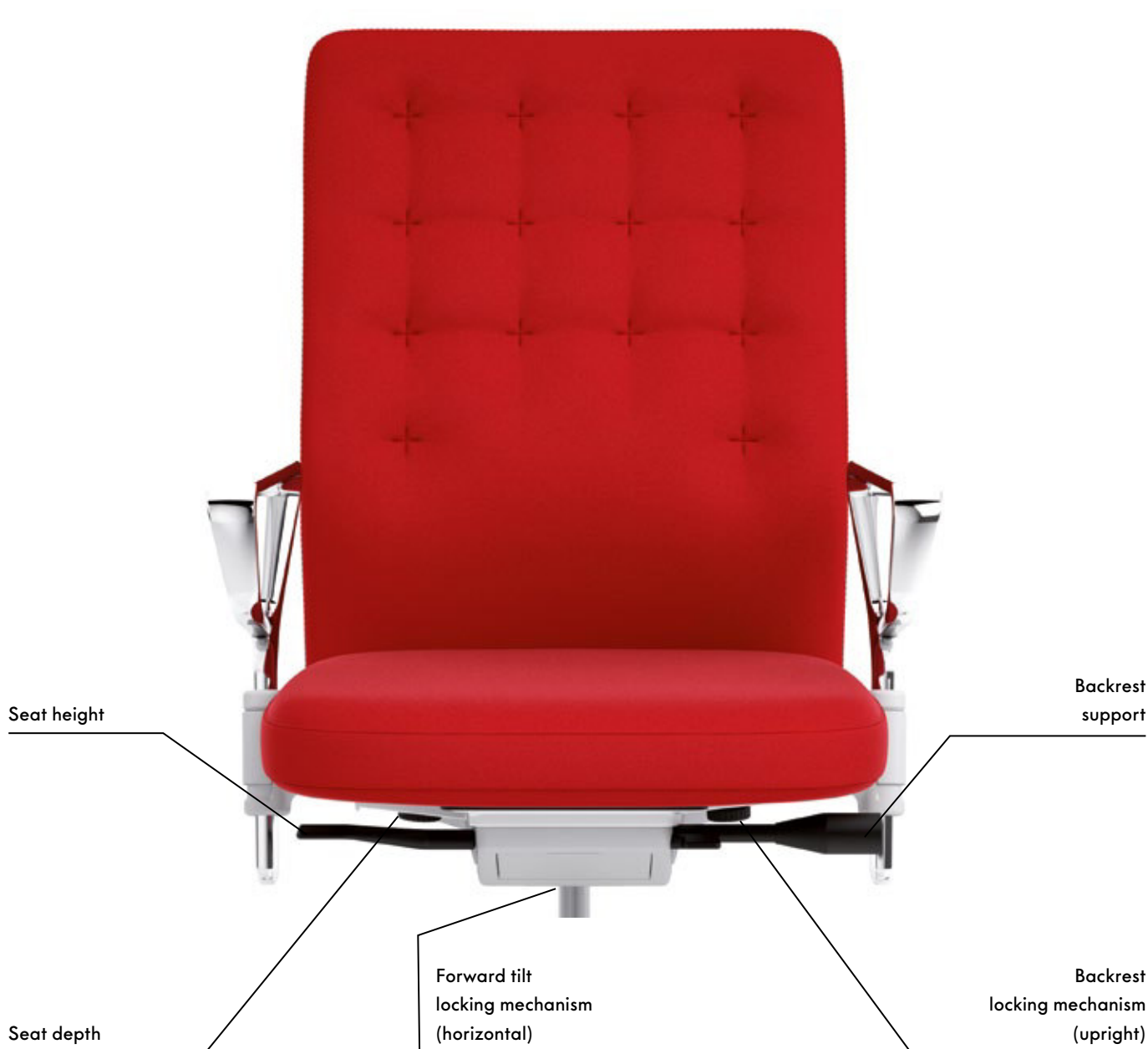


Human beings have a natural urge to move – even while seated. Ideally, an office swivel chair should not only offer freedom of movement but also encourage dynamic sitting habits. With this in mind, Vitra developed the FlowMotion mechanism.

This patented mechanical unit supports the sitter across the full range of movement - the first to do so not merely when the user leans back but also when the seat is tilted forward. Nearly all functions can be adjusted while sitting in the chair, and just a few quick turns of an adjustment screw enable precision tuning from minimum to maximum resistance. Even if the settings are not optimally adjusted on occasion, the chair still retains its ergonomic properties.

The functional features of the compact and robust FlowMotion mechanism come in four different combinations:

- with forward tilt and seat depth adjustment
- with forward tilt, without seat depth adjustment
- without forward tilt, with seat depth adjustment
- without forward tilt and without seat depth adjustment



The harmonious range of motion enabled by the FlowMotion mechanism encourages the user to develop dynamic sitting habits. The adjustment options for the backrest resistance and the forward tilt function allow the user to assume any position between the maximally reclined lounging angle and the forward-tilted sitting posture, exploiting the full range of movement without physical exertion. The sitter enjoys unlimited freedom of movement but is supported by the chair at all times.

Benefits of active sitting:

- promotes spinal health by enhancing the supply of nutrients to vertebral discs.
- keeps the muscles supplied with oxygen, which helps to prevent tension and strain.
- activates circulation and supports inner organ function. This enhances the ability to concentrate and helps relieve physical tension and stress.



The FlowMotion mechanism offers forward tilt adjusted to the user's weight.



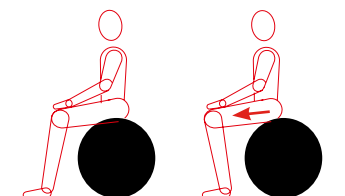
The ID Chair provides support in any position.



Movement activates the muscles and relieves pressure on the spinal discs.



A study conducted by the Institute for Biomechanics at the Swiss Federal Institute of Technology Zurich (ETH) demonstrated that the chair's range of movement is fully utilised. This is an indication that the chair enables dynamic sitting. The forward tilt function gives users the same kind of experience as sitting on an exercise ball.



EMG measurements have shown that using the weight-dependent forward tilt position increases muscle activity in the stomach and back, which stabilises the lumbar vertebrae.



EMG (electromyography)

MRI measurements have proven that the forward tilt function triggers movement in all segments of the lower spine. This relieves pressure and enhances diffusion of nutrients to the vertebral discs.

The active prevention of health problems can be reinforced by dynamic sitting, with the forward tilt position having an especially positive effect.



Upright MRI, Zurich

The ProMatic mechanism was developed to satisfy the requirements of touchdown workstations, conference and meeting areas as well as workspaces where there is a desire for chairs with a minimal number of adjustment settings.

Office life increasingly revolves around interaction and communication. Employees must be able to work with others in an interdisciplinary fashion, sharing knowledge and solving problems as a team. Work, conference and meeting functions overlap and intermingle with ever greater frequency. Office furnishings need to respond to changing requirements with flexible, no-fuss solutions. These needs led to the development of the ProMatic mechanism.

Alongside the FlowMotion mechanism, it adds another functional feature to ID Chair's kit of modular options. It automatically adjusts to the user's weight - only the seat height needs to be set. Quick and simple handling saves time and prevents users from making incorrect adjustments.



3D ARMRESTS



The 3D armrests feature adjustable height, width and depth and a 360° swivel function. The comfortable, soft armrest pads prevent pressure points from forming.

2D ARMRESTS



The 2D armrests are adjustable in height and width. The comfortable, soft armrest pads prevent pressure points from forming.

HEIGHT-ADJUSTABLE RING ARMRESTS



The height-adjustable ring armrests in polished die-cast aluminium are ideally suited for conference venues.

FIXED RING ARMRESTS



The fixed ring armrests in polished die-cast aluminium provide an elegant, minimalist solution for conference settings.

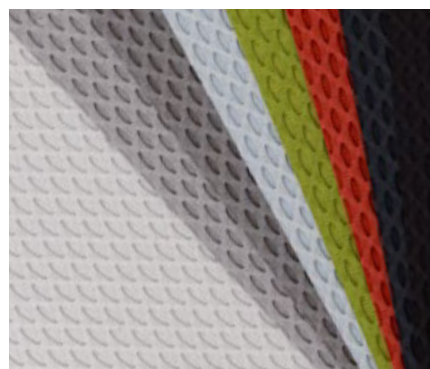


Diamond Mesh

100% polyester | 600 g/m²

Diamond Mesh is a technical spacer fabric with a striking appearance and pleasant feel. It consists of polyester yarns interwoven into a honeycomb structure, which enhances thermal comfort for sitters. Diamond Mesh is robust and antistatic.

Available in 9 colours.

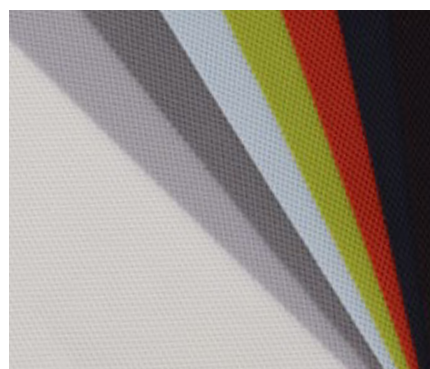


Silk Mesh

Colour nero: 67% polyester, 33% polyamide |
other colours: 100% polyester | 300 g/m²

Silk Mesh is a technical spacer fabric with an elegant look and soft feel. It consists of polyester yarns that form a finely woven surface. Silk Mesh is easy to care for, durable, antistatic and breathable.

Available in 9 colours.



Plano

100% polyester | 230 g/m²

Plano is a robust and versatile fabric suited to a wide range of applications, making it an ideal choice for office environments. Due to the flat texture of the polyester weave, Plano has an understated appearance that is compatible with countless products. Available in 21 colours.

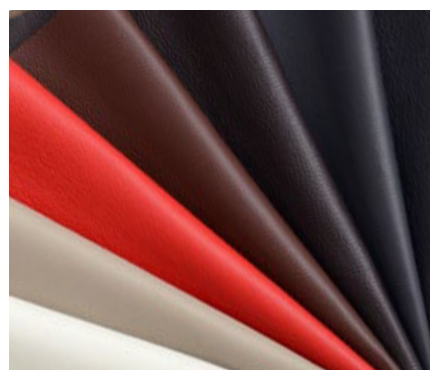


Leather

1.1-1.3 mm thick, pigmented leather

The standard grade leather used by Vitra is a robust leather, dyed-through, pigmented and embossed with an even grain pattern. It is highly durable and easy to maintain.

Available in 7 colours.





Twill

70% new wool, 30% polyamide |
Twill 325 g/m²

The high percentage of natural fibres gives Twill very pleasant tactile qualities and an inviting, elegant appearance. Twill is extremely durable and has excellent abrasion resistance (min. 100,000 Martindale cycles, DIN EN ISO 12947-2).

Available in 7 colours.



CARE INSTRUCTIONS

Vacuuming is sufficient for the removal of dust and lint from upholstery fabrics. For the treatment of spots on cover fabrics and plastic surfaces, we recommend the use of a soft, damp cloth and a mild, neutral cleaning agent. Polished aluminium can be wiped with a normal glass cleaner and dried with a clean cloth. For the care of leather covers, please consult the instructions in the leather brochure included with the product. Further maintenance information can be provided by your Vitra sales representative; the removal of difficult stains should always be entrusted to an expert cleaning company.

We recommend the use of environmentally friendly cleaning agents as well as regular care of your furnishings and the prompt treatment of spots and stains. Before using a detergent or other cleaning agent, it is advisable to test it on a concealed area.



Clima Seat

The ID Chair with a Silk Mesh seat cover is optionally available with Clima Seat enhancement.

The patented Clima Seat is a breathable fleece layer beneath the seat cover. It accelerates the evaporation of moisture on the seat and ensures comfort even during prolonged periods of sitting.

By combining the excellent wicking properties of the Clima Seat with the breathability and other advantages of Silk Mesh, an extraordinary improvement in overall comfort can be achieved.



Vitra Test Centre

All Vitra office chairs are subjected to rigorous testing, based on the parameters of 15 years of use, at the company's own Test Centre. Vitra carries out tests that go far beyond standard requirements, with an inspection catalogue comprised of the world's toughest tests (simulation of

worst-case usage).

Over the years, Vitra has developed additional tests of its own that are not found in any official catalogue of standards.



Blue Angel

The ID Chair Concept bears the 'Blue Angel' environmental label for low-emission upholstered furniture, which certifies that the manufacturing methods and materials of the product comply with guidelines for environmental protection and consumer safety. The Blue Angel (1978) is one of the oldest environmental labels.



Greenguard

The GREENGUARD label for indoor air quality (2001) recognises products that contribute to the creation of healthier indoor environments.



GS

With the GS seal for tested safety, a state-authorised inspection institute certifies the suitability and safety of the construction and monitors production at regular intervals.



Ergonomics Approved

The LGA certificate 'Ergonomics Approved' confirms the fulfilment of ergonomic requirements and testing criteria that exceed the minimum legal regulations for office swivel chairs.

BIFMA

Bifma

ID Chair fulfils the ANSI/BIFMA standard X5.1-2011, thus meeting the stringent safety requirements for the US market.



The long life of the ID Chair not only has a positive impact on the environment, but is also of economic benefit to the customer. This is why Vitra goes beyond the legally mandated warranty to offer its project customers the Green User Agreement. Thanks to this sustainable service agreement, companies are able to calculate the total cost of ownership for the entire lifespan of the product - i.e. all costs associated with usage as well as the purchase price.

Year 1

The customer pledges to use and maintain the product in a proper manner. In return, Vitra agrees to replace ID Chairs free of charge in the case of manufacturing or material defects and to exchange worn parts.

Year 5

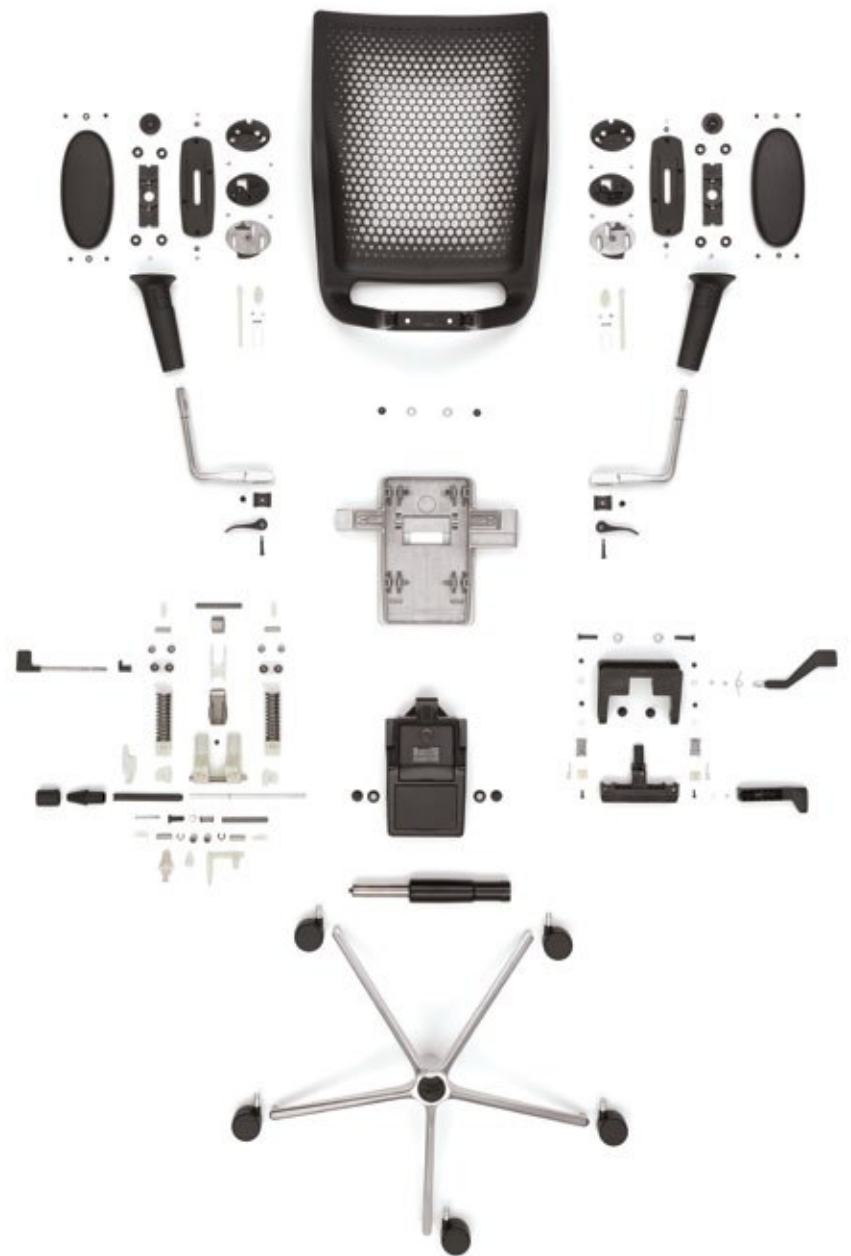
Five years after signing the Green User Agreement, a service check is performed on the ID Chairs at the customer's premises. This extends the agreement for another five years.

Year 10

The next service check is conducted. The Green User Agreement is extended by another five years.

Year 15

ID Chairs can now be returned to Vitra for professional recycling.



The construction of ID Chairs uses the smallest possible number of components, and its constituent materials are easy to separate for subsequent recycling.

The chairs are up to 95% recyclable and consist of up to 48% recycled materials. They have been awarded the 'Blue Angel' seal for low-emission upholstered furniture and GREENGUARD certification for indoor air quality.

All ID Chairs share the same technical platform, which greatly facilitates maintenance and servicing. Parts subject to wear are simple to replace, the backrest and seat can be disassembled without the need for special tools, and the seat covers are easy to remove.

Armrests

- 1. 3D armrests
- 2. 2D armrests
- 3. Ring armrests (height-adjustable)
- 4. Ring armrests (non-adjustable)

Accessories

- 1. Headrest (for ID Mesh)
- 2. Clothes hanger (for ID Mesh)
- 3. Clothes hanger (for ID Trim and ID Trim L)

Mechanical unit

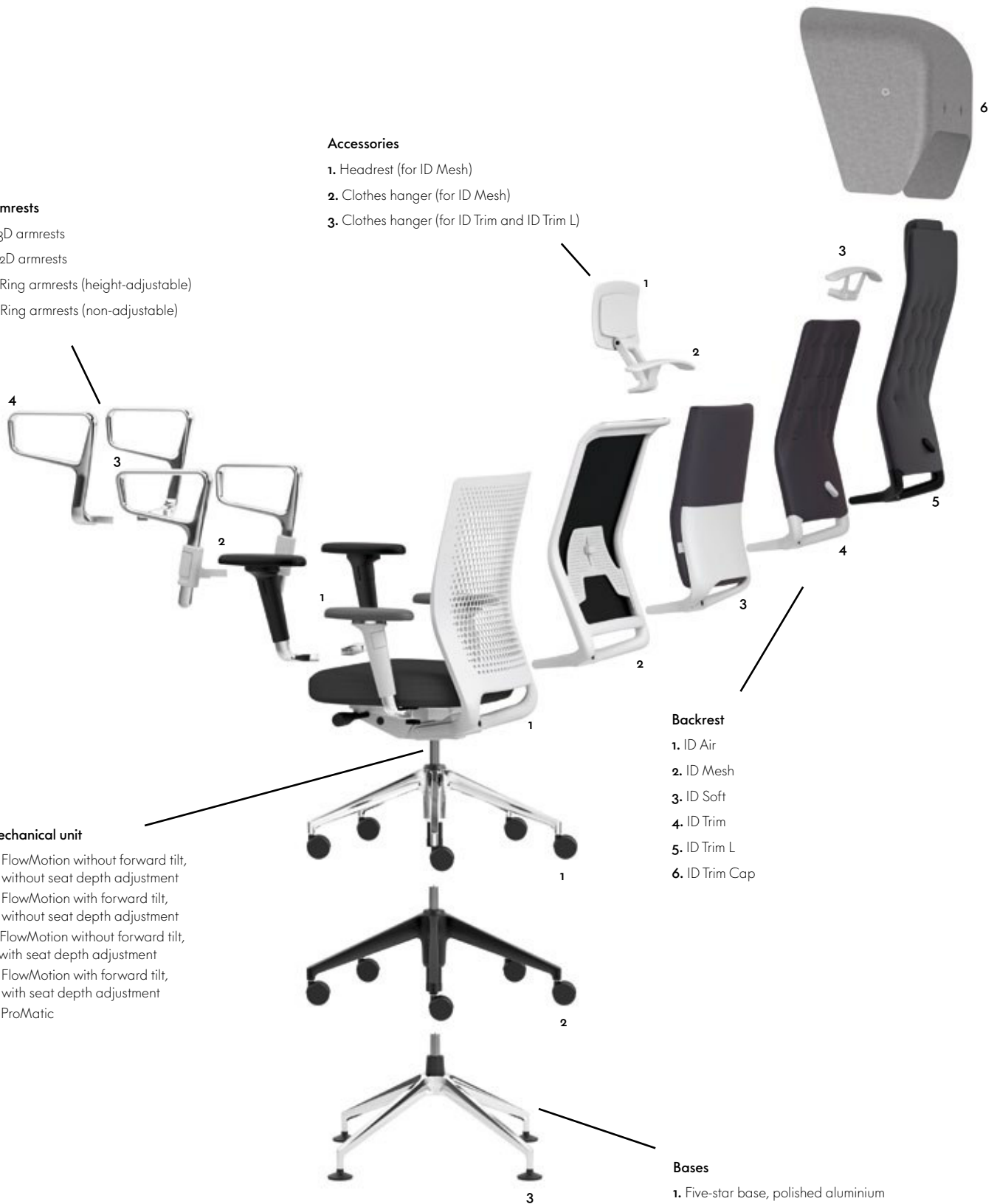
- a) FlowMotion without forward tilt, without seat depth adjustment
- b) FlowMotion with forward tilt, without seat depth adjustment
- c) FlowMotion without forward tilt, with seat depth adjustment
- d) FlowMotion with forward tilt, with seat depth adjustment
- e) ProMatic

Backrest

- 1. ID Air
- 2. ID Mesh
- 3. ID Soft
- 4. ID Trim
- 5. ID Trim L
- 6. ID Trim Cap

Bases

- 1. Five-star base, polished aluminium
- 2. Five-star base, plastic in basic dark
- 3. Four-star base, polished aluminium (only with ProMatic)



ID Trim

Antonio Citterio, 2010

vitra.



ID Trim with four-star base
and fixed ring armrests



ID Trim with 3D armrests



ID Trim with 3D armrests

Office swivel chair with 2D or 3D armrests in accordance with EN 1335, Ergonomic Seal of Approval. The version equipped with the FlowMotion mechanism with forward tilt and seat depth adjustment complies with BS 5459-2 (24-hour test).

Mechanical unit: FlowMotion or ProMatic mechanism. Both mechanisms can be locked in the upright sitting position. Mechanical unit matches the frame colour (basic dark or soft grey).

FlowMotion: optionally available with or without synchronised forward tilt (can be disengaged) and with or without seat depth adjustment. Individual adjustment of backrest resistance and forward tilt.

ProMatic: mechanism automatically adjusts to the user's weight, without forward tilt and without seat depth adjustment. Only the seat height requires manual adjustment. ProMatic does not bear the Ergonomic Seal of Approval.

Backrest: frame in polyamide (basic dark or soft grey). Optional height-adjustable lumbar cushion. Cover in fabric or leather.

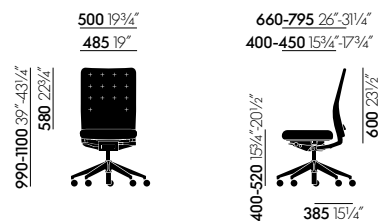
Armrests: 2D armrests with adjustable height and width or 3D armrests with adjustable height, width and depth and 360° swivel function. Armrest supports in polished aluminium. Armrest sleeves in polyamide matched to the frame colour (basic dark or soft grey). With polyurethane pads in basic dark (for frames in basic dark) or dim grey (for frames in soft grey). Optionally available with ring armrests in polished die-cast aluminium, with or without height adjustment, for use in conference areas. For height-adjustable ring armrests, armrest supports in polyamide are matched to the frame colour (basic dark or soft grey).

Seat: polyurethane foam upholstery. Seat and back covers in fabric or leather. Leather covers are not recommended for chairs with forward tilt, since a leather surface might cause users to slide off the seat.

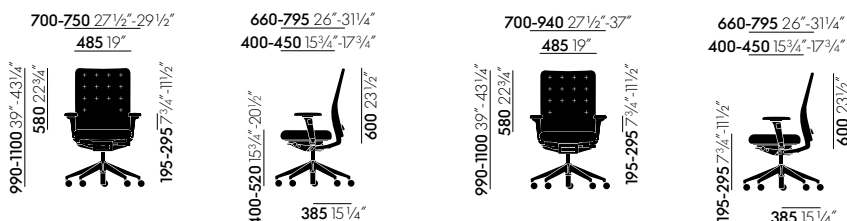
Base: five-star base in polyamide (basic dark) or polished die-cast aluminium, equipped with double castors (Ø 60 mm) or glides.

Accessories: clothes hanger in polyamide (basic dark or soft grey), max. weight load: 2 kg.

Conference version: conference chair with four-star swivel base in polished die-cast aluminium on glides in accordance with EN 16139. Equipped with ProMatic mechanism for automatic adjustment to the user's weight (without forward tilt, without seat depth adjustment); fixed seat height and shock-absorbing seat suspension; backrest cannot be locked in the upright position.

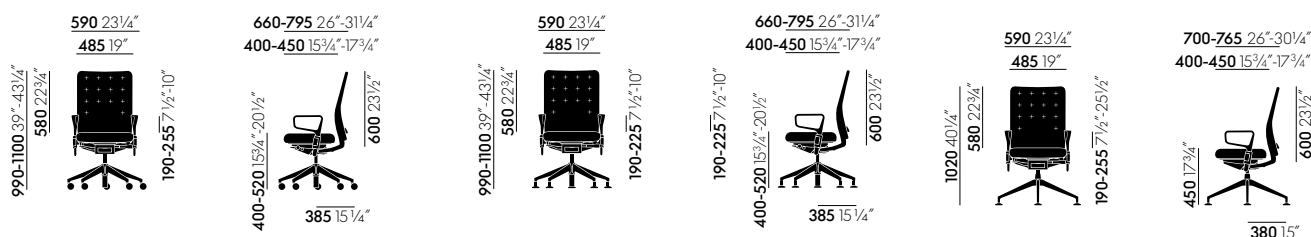


ID Trim without armrests

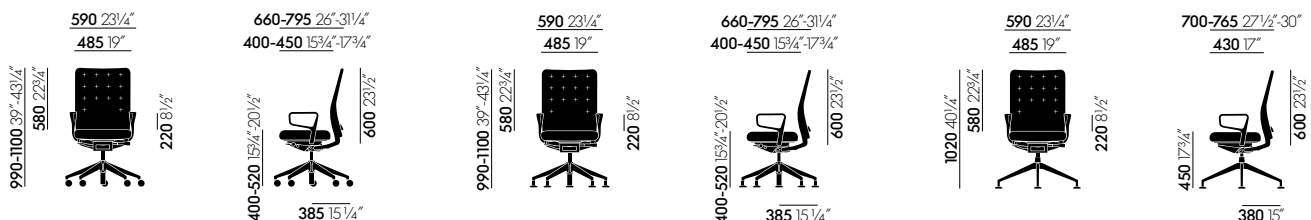


ID Trim with 2D armrests

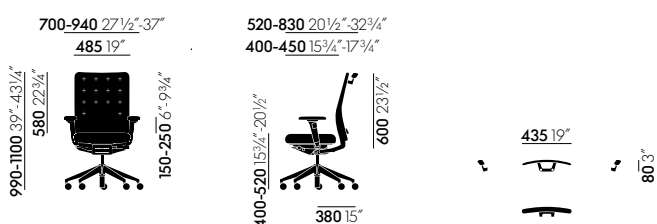
ID Trim with 3D armrests



ID Trim with height-adjustable ring armrests

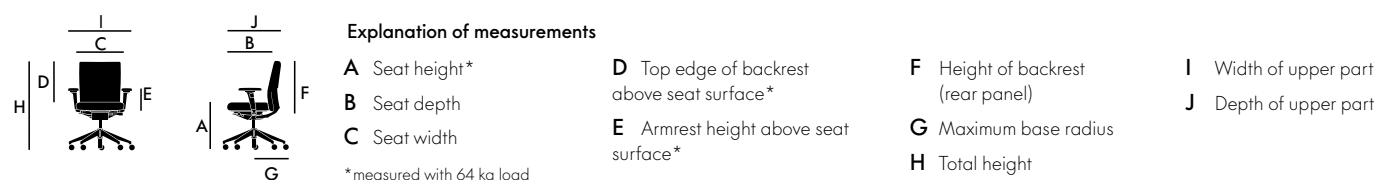


ID Trim with fixed ring armrests

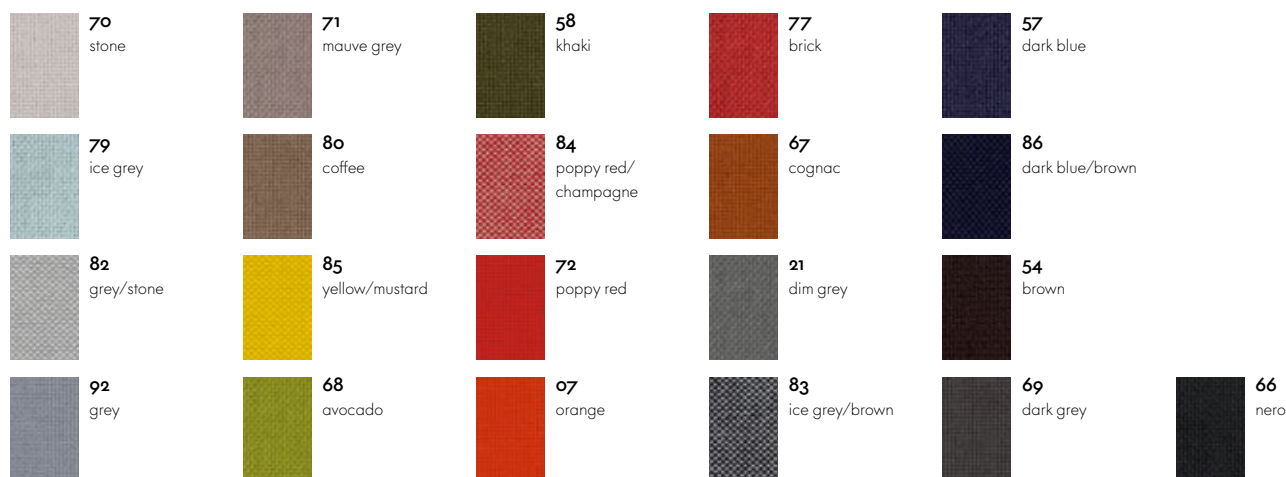


ID Trim with clothes hanger

ID Trim clothes hanger



SURFACES AND COLOURS



Plano



Leather

Twill

Frame

Base